

SCUBAPRO

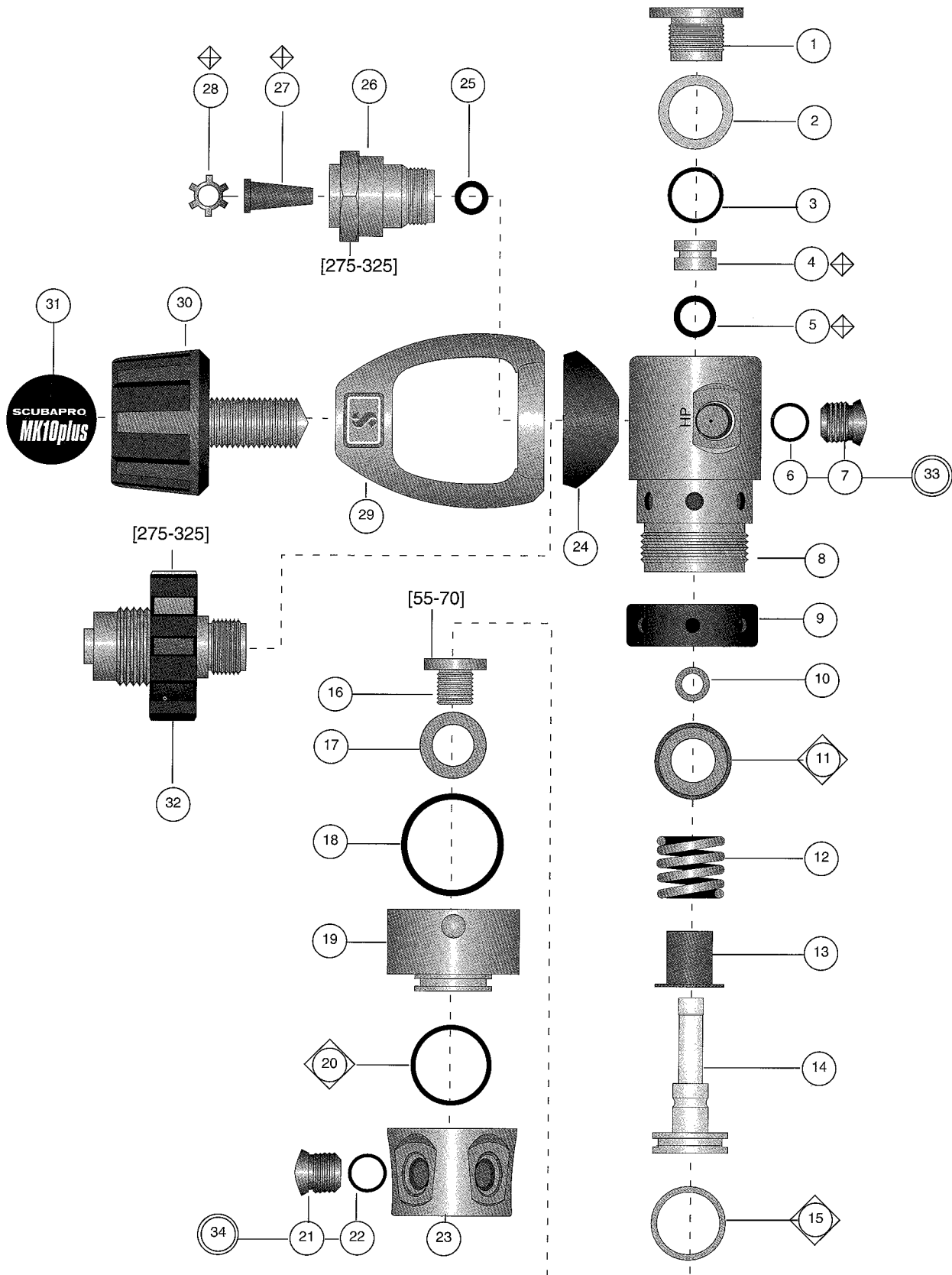
Technical Service Schematic

MK10 PLUS First Stage 10-550-X00

Date 12/97

Revision A

Annual Repair Parts Kit - 10-550-041



SCUBAPRO

Technical Service Schematic

MK10 PLUS FIRST STAGE 10-550-000

Date 12/97 Revision A

Annual Repair Parts Kit - 10-550-041

PARTS

ITEM	QTY	PART NUMBER	DESCRIPTION	COST
1	1	10-101-162	SEAT RETAINER	
2	3	01-060-219	IP ADJUSTMENT SHIM WASHER	
3	1	01-050-157	SEAT RETAINER O-RING (RED)	
4	1	10-101-161	HP SEAT	
5	1	01-050-142	SEAT O-RING (AMBER)	
6	2	01-050-138	HP PLUG O-RING (BLUE)	
7	2	10-101-039	HP PLUG (7/16"—20 THREAD)	
8	1	10-500-108	BODY, MK 10	
9	1	10-500-106	TRIM SLEEVE	
10	1	01-050-137	PISTON SHAFT O-RING (AMBER)	
11	1	10-500-118	SPRING CENTERING WASHER	
12	1	01-020-217	SPRING	
13	1	10-500-114	PISTON BUSHING (TIB)	
14	1	10-500-117	MK10 PLUS PISTON	
15	1	01-050-162	PISTON HEAD O-RING (AMBER)	
16	1	10-500-103	SWIVEL RETAINER	
17	1	01-060-500	SWIVEL WASHER	
18	1	01-050-217	SWIVEL CAP O-RING (BLUE)	
19	1	10-500-101	SWIVEL CAP	
20	1	01-050-161	SWIVEL O-RING (BLUE)	
21	4	10-101-104	LP PLUG (3/8"—24 THREAD)	
22	4	01-050-132	LP PLUG O-RING (BLUE)	
23	1	10-500-102	5 PORT SWIVEL	
24	1	10-400-103	SADDLE	
25	1	01-050-138	YOKE RETAINER O-RING (BLUE)	
26	1	10-400-104	YOKE RETAINER	
27	1	01-028-109	CONICAL FILTER	
28	1	01-073-101	FILTER RETAINER CLIP	
29	1	10-101-131	YOKE (POLISHED)	
30	1	10-200-008	YOKE SCREW ASSEMBLY	
31	1	01-006-625	YOKE SCREW DECAL (MK 10 PLUS)	
32 ○	1	10-400-030	DIN CONVERSION KIT	
33	2	10-101-039	HP PLUG 7/16"—20 W/ O-RING ASSEMBLY	
34	4	10-101-006	LP PLUG 3/8"—24 W/ O-RING ASSEMBLY	
●		10-550-025	MK10 PLUS UPGRADE KIT	

Technical Information:

The MK10 plus and MK20 utilize a special lubricant to improve intermediate pressure stability and performance. This new O-ring lubricant is **Christo-Lube** and is packaged under the SCUBAPRO label, p/n 41-047-000. It should be used in all MK10 and MK20 applications.

Intermediate pressure should be checked at 500 psi and 3000 psi. A slight drift is acceptable with this new seat and piston configuration. Follow the performance standards as outlined in Engineering Bulletin 242.

Special Engineering Note:

A maximum of three (3) shim washers, item 2, p/n 01-060-219 may be used to adjust the intermediate pressure to specified limits.

Flow-through piston designs will, under some conditions, make a whistling noise during flow. To alleviate, heavily lubricate item 10, p/n 01-050-137, O-ring and / or replace item 4, p/n 0-101-161 HP seat.

MK10 and M10PLUS have some components that are not interchangeable.

Legend:

- NOT SHOWN
- OPTIONAL ITEM
- ▲ LIMITED WARRANTY
- OLDER CONFIGURATION
- * SEE NOTE
- ◇ DYNAMIC O-RING-REPLACE ANNUALLY
- ◊ ANNUAL REPLACEMENT
- () TORQUE IN INCH-POUNDS
- ⊙ ASSEMBLY